

1500 Block South 10th. Our properties at 1558 and 1543 S 10th





938 W Lapham Blvd. Immediately to the South of 1558. Structural failure.





1552 S 10th Two doors north of 1558, across from 1543. Defective roof on rear porch



1551 S 10th. Siding/Paint/Gutters/Fence





1535? S 10th. Debris/Defective parking area



1521 S 10th Defective Garage/Weeds taller than





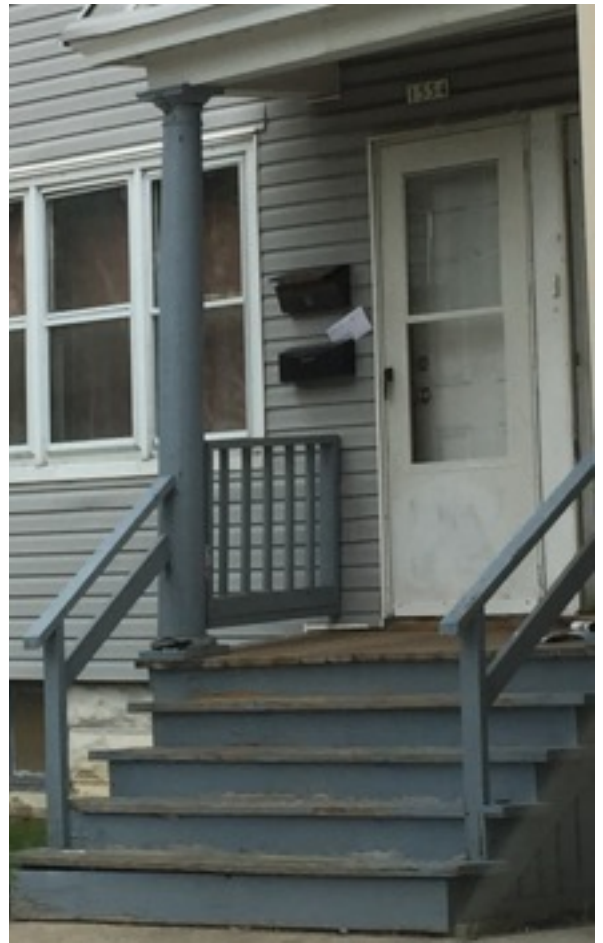
1440 S 10th Roof/ retaining wall/steps



1529 S 10th. Porch roof/Weeds/Ugly



1554 S 10th Porch/Rails/Paint





1500 S 10th - general ugliness. Needs paint etc



1508 S 10th - Rails /Steps



1512 S 10th - Paint



1500? S10th Rails Paint Gutters



1540 S 10th Illegally parked car

->

