

1428 S 6th Our property



Ours is the best property on the block. A statement that the inspector concurred with.

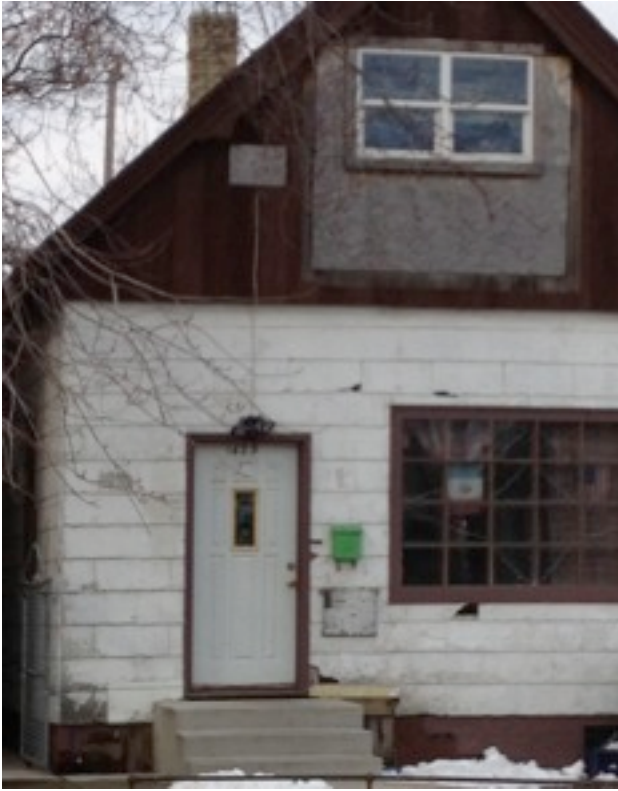


This is the inspector's definition of "defective siding"

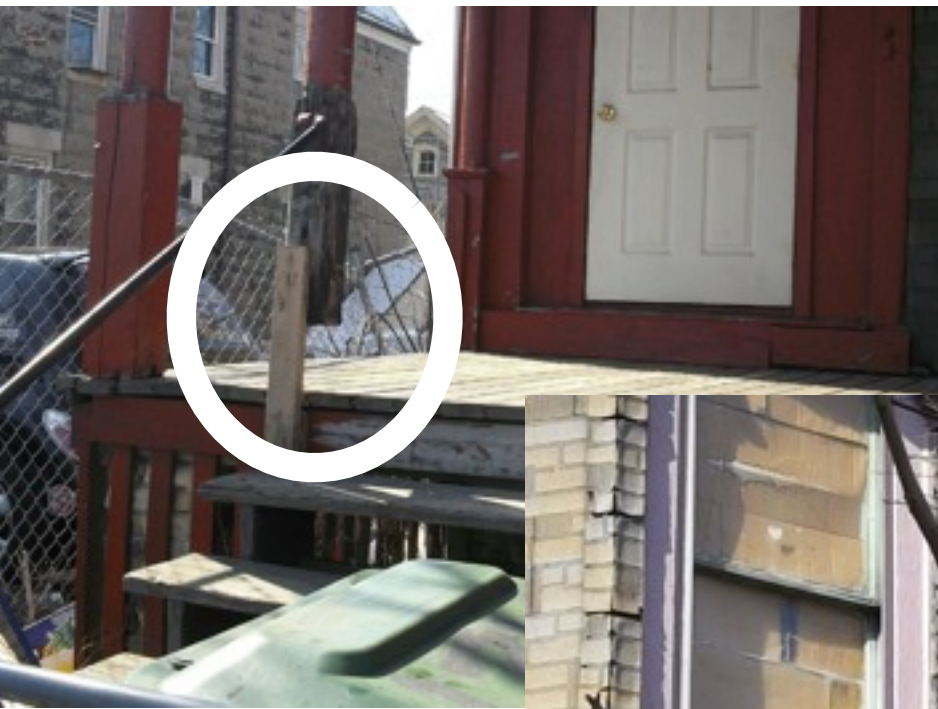
1401 S 6th. Missing panel on south side of building.



1423 S 6th. (across 1 house north) Defective/missing siding, window changed without permit, needs paint, no rails.



1427 S 6th (Directly across) Needs roofing, siding, rails, porch paint. broken windows, needs paint and you gotta love the anti gravitational porch support



1433 S 6th (Across street 1 door south)

needs front porch work



1418 S 6th 3 doors north Needs paint. Rails, siding



**1420 S 6th** 2 doors north  
Needs paint



**1424 S 6th** Adjoining North Missing siding, needs paint, defective front steps needs paint, siding, front step is defective, sidewalk is defective.



1438 S 6th Adjoining South. Missing windows, failing parapet wall missing siding etc.



528 W Orchard / 527 W Greenfield Adjoining rear

